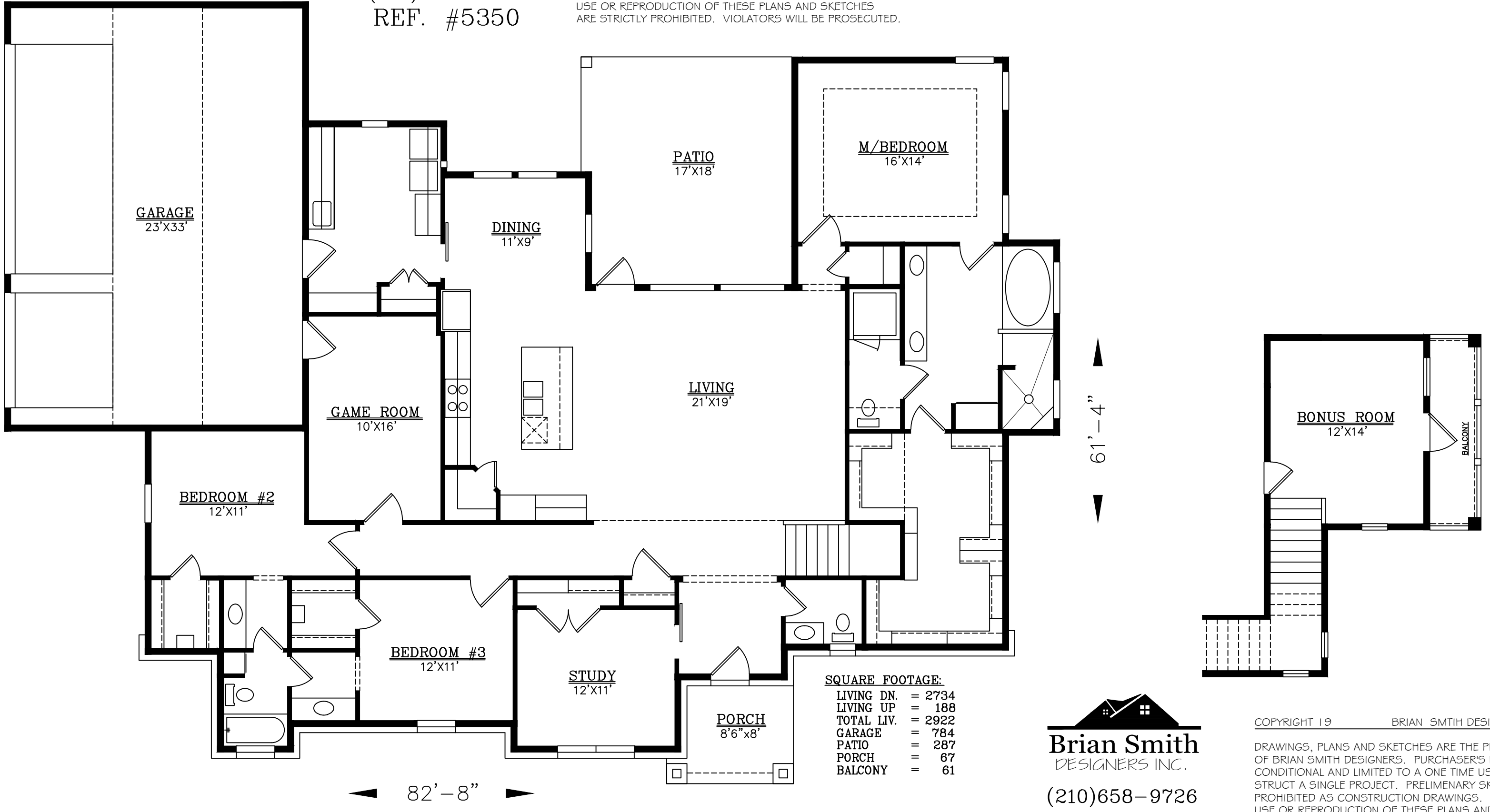




(210)658-9726
REF. #5350

COPYRIGHT 19 BRIAN SMITH DESIGNERS

DRAWINGS, PLANS AND SKETCHES ARE THE PROPERTY OF BRIAN SMITH DESIGNERS. PURCHASER'S RIGHT IS CONDITIONAL AND LIMITED TO A ONE TIME USE TO CONSTRUCT A SINGLE PROJECT. PRELIMINARY SKETCHES ARE PROHIBITED AS CONSTRUCTION DRAWINGS. UNAUTHORIZED USE OR REPRODUCTION OF THESE PLANS AND SKETCHES ARE STRICTLY PROHIBITED. VIOLATORS WILL BE PROSECUTED.



(210)658-9726
REF. #5350

COPYRIGHT 19 BRIAN SMITH DESIGNERS

DRAWINGS, PLANS AND SKETCHES ARE THE PROPERTY OF BRIAN SMITH DESIGNERS. PURCHASER'S RIGHT IS CONDITIONAL AND LIMITED TO A ONE TIME USE TO CONSTRUCT A SINGLE PROJECT. PRELIMINARY SKETCHES ARE PROHIBITED AS CONSTRUCTION DRAWINGS. UNAUTHORIZED USE OR REPRODUCTION OF THESE PLANS AND SKETCHES ARE STRICTLY PROHIBITED. VIOLATORS WILL BE PROSECUTED.



(210)658-9726
REF. #5350

COPYRIGHT 19 BRIAN SMITH DESIGNERS

DRAWINGS, PLANS AND SKETCHES ARE THE PROPERTY OF BRIAN SMITH DESIGNERS. PURCHASER'S RIGHT IS CONDITIONAL AND LIMITED TO A ONE TIME USE TO CONSTRUCT A SINGLE PROJECT. PRELIMINARY SKETCHES ARE PROHIBITED AS CONSTRUCTION DRAWINGS. UNAUTHORIZED USE OR REPRODUCTION OF THESE PLANS AND SKETCHES ARE STRICTLY PROHIBITED. VIOLATORS WILL BE PROSECUTED.